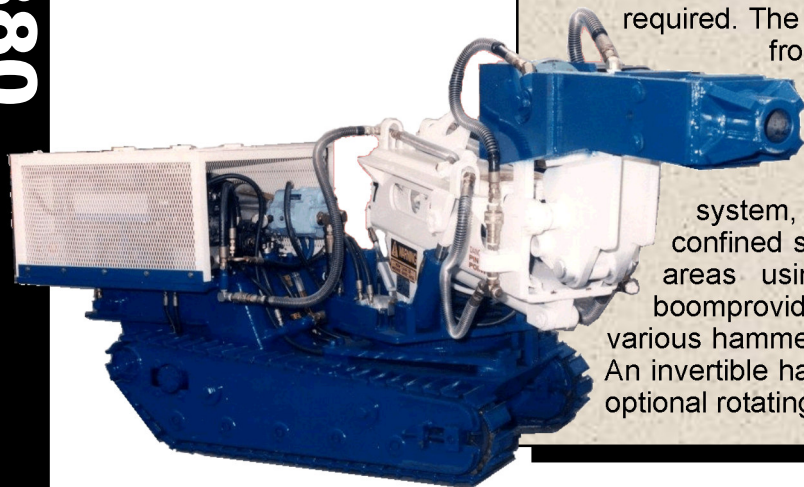


The lightweight Model GOM-380 Jr machine is the smallest of the crawler track type machines in KT-Grant, Inc.'s equipment line up. Its compact size still delivers a powerful punch via 1,000 ft-lb class hydraulic hammer, much like its "Bigger Brothers".

The GOM-380 Jr is designed to eliminate the need for personnel entry into limited access, confined space areas where demolition work is required. The operator controls the machine a safe distance away from hazardous working conditions, similar to most of KT-Grant Inc.'s equipment, with its remote pendant control.

A powerful 30 HP electric motor drives the hydraulic system, without the dangers associated with diesel fumes in confined spaces. The machine displays its agility best in tight areas using its independent track drive. The telescopic boom provides 2'-6" of stroke with 180° of swing to accommodate various hammer positions, providing added flexibility in tight areas. An invertible hammer mount provides maximized coverage, and an optional rotating mount gives additional side access.



SPECIFICATIONS GOM-380

GENERAL

Machine length:	10'-7 3/4"	(3245 mm)
Machine width:	3'-1 3/4"	(959 mm)
Machine height (without hammer):	3'-9 1/2"	(1156 mm)
Extended reach from center of rotation to end of hammer (with out tool bit):	8'-6 1/2"	(2604 mm)
Boom stroke:	2'-6"	(763 mm)
Boom angles:	+17°, -0°	
Boom swing:	+90°, -90° non-continuous	
Tool angles:	+27°, -80°	
Tool angle (Inverted):	+46°	
Tracks:	Independent bi-directional	
Weight:	5,840 lbs.	(2649 kg)

HYDRAULIC SYSTEM

Hydraulic pump:	Piston
Pump displacement:	29 GPM (110 LPM)
Boom hoist cylinders:	Two (2)
Boom telescopic cylinder:	One (1)
Tool cylinder:	One (1)
Reservoir capacity:	50 GAL (189 L)

MOTOR

30 HP electric motor, 230/460 VAC, 1800 RPM

HAMMER

Model:	GRH-125 Hydraulic
Tool bit diameter:	3" (76.2 mm)

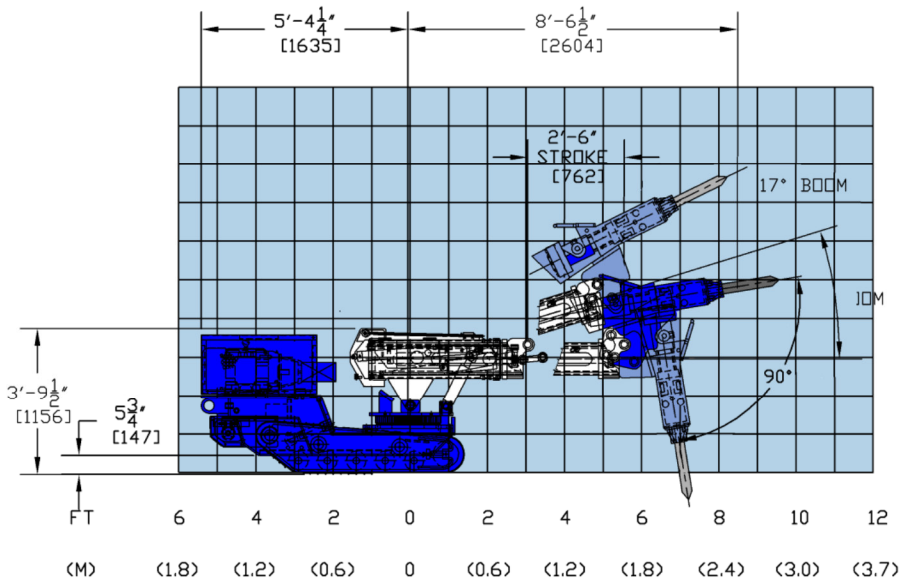
CONTROLS

Wired on / off rocker switch pendant controls.

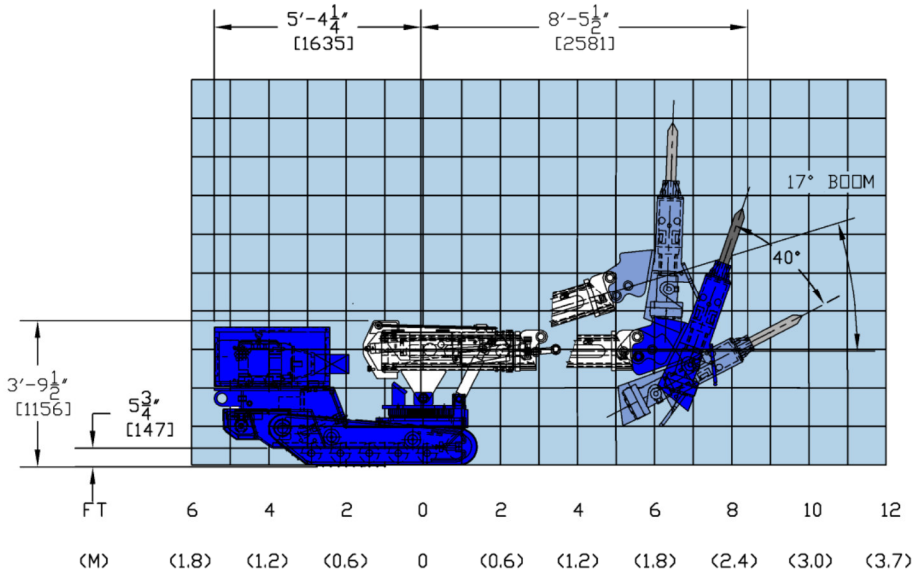
OPTIONAL EQUIPMENT

Diesel engine, radio controls pneumatic hammer, rotating hammer mount, scrapper bit, spade bit

GOM-380 WORKING RANGE



STANDARD HAMMER MOUNT CONFIGURATION



INVERTED HAMMER MOUNT CONFIGURATION



3073 RT 66
 Export, PA 15632
 724-468-4700 Fax: 724-468-8188
 www.kt-grantinc.com